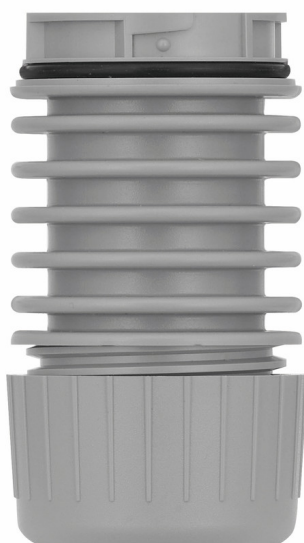


KombiSIGN 40 / DesignLOOK

Adapter f. tube mount. RM GY



| | |
|------------------|---------------------|
| Part No.: | 630.730.00 |
| Series: | KombiSIGN 40 |



MECHANICAL DATA

| | |
|-----------------------------|---------------|
| Height | 80 mm |
| Diameter | 40 mm |
| Materials | PC |
| Housing colour | Grey |
| Protection category | IP66 IP69K |
| Cable entry | Through hole |
| Cable entry maximum | d = 9 mm |
| Type of fixing | Tube mounting |
| Working temperature minimum | -30°C |
| Working temperature maximum | +60°C |
| Weight with packaging | 45 g |
| Product weight | 45 g |

ELECTRICAL DATA

| | |
|------------------|---|
| Pollution degree | 3 |
|------------------|---|

APPROVAL DATA

| | |
|-------------------------------|--------------------------------|
| Conforms with CE | No |
| Conforms with RoHS directive | Fulfills substance restriction |
| WEEE | No |
| Conforms with ATEX-directive | No |
| Conforms with CCC | No |
| Conforms with UL | cULus |
| UL Type Rating | Type 12 |
| Conforms with FCC | No |
| Conforms with IC | No |
| EAC certificate available | Yes |
| Conforms with UKCA (Importer) | No |
| Conforms with CMIM | No |
| Conforms with AS-I | No |
| ICAO Certification | No |
| Conforms with DNV | No |
| Conforms with RoHS CN | No |
| Conforms with VdS | No |

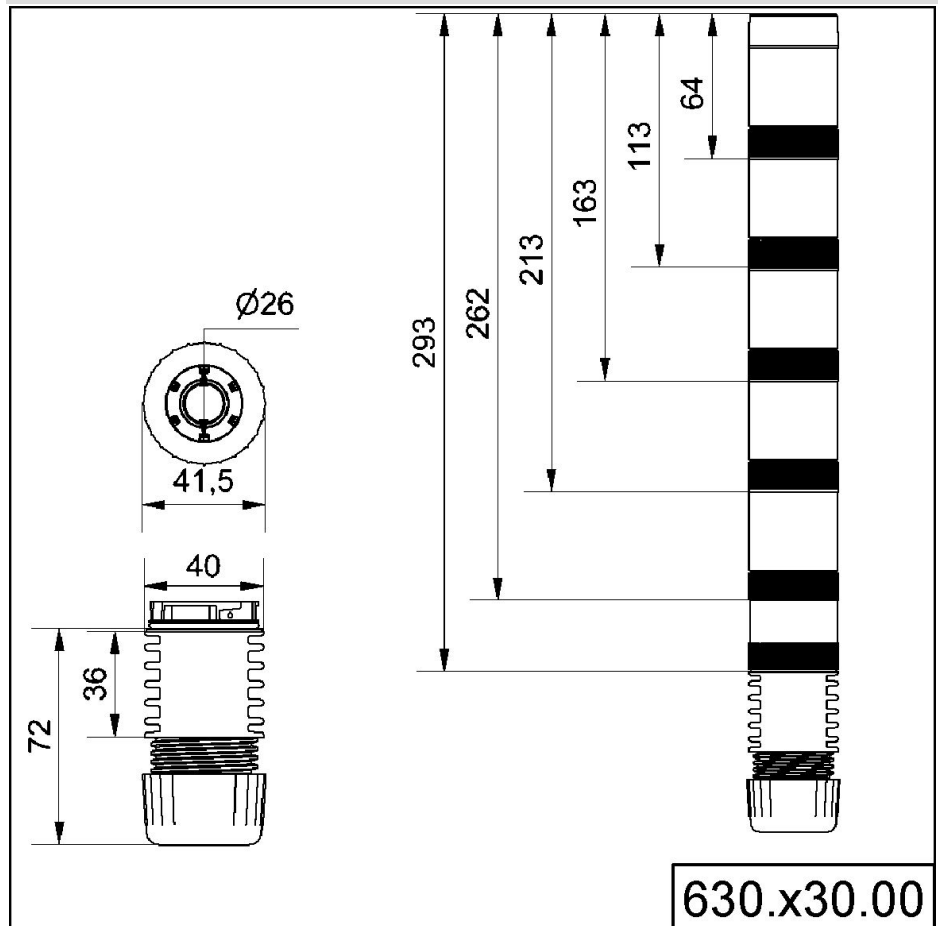


For additional installation and mounting information, refer to the appropriate user guide at www.werma.com. This printed copy is for information only and is subject to alteration.

KombiSIGN 40 / DesignLOOK

Adapter f. tube mount. RM GY

DRAWING



For additional installation and mounting information, refer to the appropriate user guide at www.werma.com. This printed copy is for information only and is subject to alteration.